

Summer 2002



Hamilton-Wentworth Newsletter

April 2002 conference a success!

Inside this issue:

Celebration for St. Charles Learners 2

Teaching ESL in China 3

SPELT (for teachers wishing to teach abroad) 4

Publishers' Page 5

Useful Websites 6-7

Reminders 8



EVALUATIONS COMPLETED: 101
COMPLETELY SATISFIED: 97%

The April Mini-Conference was a complete success. The presenters are selected because they are outstanding in their field. We offered a variety of workshops to cover the spectrum from preschool to adult ESL needs. The publishers' display was extremely popular with the biggest and the best attending. This year we had upwards of 150 attending. The coffee was hot (special thanks to Roberta for going in at 6:30 to plug it in for us) and the pastries fresh. Many thanks to all those who participated. See you in October at the Annual General Meeting!



We are now emailing the newsletter to all members. If you would you like future issues of the newsletter mailed to you please email Rose Coffey at : mar1638@yahoo.com





A Celebration of English For St. Charles Learners

Students either recited poetry or delivered a speech which they had written. It was inspiring to listen to the plight of both the ESL and the LBS students.

A Celebration of English for St. Charles Learners took place at our St. Charles Mountain Centre on Thursday April 25, 2002. The celebration evolved from our St. Charles ESL Speech Competition. We felt it was important to highlight the hard work of our instructors by showcasing the progress of the students. We also

decided that the competitive element detracted from the amazing accomplishments of all of the students so we removed it. The Celebration was planned in conjunction with Catholic Education Week. It included fifteen ESL/LINC students from the Basic, Intermediate and Advanced levels and four LBS students. Students either recited poetry or

delivered a speech which they had written. It was inspiring to listen to the plight of both the ESL and the LBS students. The former were thankful for their progress in speaking English while the latter were appreciative of their ability to read and write. The instructors and the student participants deserve all the credit for the success of this event.

Sending children back home to be raised

By: Rose Coffey

I attended a lecture in Toronto and received this information that I think could be useful to teachers with adult students.

The Scarborough Hospital:

Discussions on trends for some families to send their children back home to be raised by relatives or caregivers for a few years.

Parents may want to consider the following:

Advantages for Parents

- They are able to adjust to living in a new country knowing that the children are being well cared for by a trustworthy person.
- It is one less worry while learning a new language, getting re-training for work.
- It is cheaper to raise your children back home.

Advantages for Children

- The children's physical needs are cared for by a trustworthy adult.

Disadvantages for Parents

- The long-standing separation harms the parent-child relationship.
- It is difficult to parent a child that has been raised by another adult.

Disadvantages for Children

- They lose the loving support of parents and the security of home.
- They have to face adjustments to another primary caregiver, language, school, friends, culture, weather etc.
- They often act out their feelings of loss in a manner, which is troublesome.

To receive this document in Chinese or if you would like to learn more about community resources that could help keep your children with you in Canada contact Rose Coffey at mar1638@yahoo.com

Teaching ESL In China

For the past three summers Brock University has offered ESL additional qualifications courses Parts 1, 2, and 3 with a teaching practicum in China.

Teachers work in teams to teach elementary or secondary school students or teachers for 3 weeks in schools located in various cities in China. This year the cities are Beijing and Chongqing, two of China's largest and most interesting places to visit.

Several teaching teams are located in one hotel with their Brock instructor. During the day each team is taken to school by taxi or minibus where each teacher has a class to teach along with a Chinese teacher who acts as a teaching partner. At the end of the day teams return to the hotel for dinner, discussion and planning for the next day's lessons. Weekends are reserved for local touring.

Each year the program has grown. This year more than 60 people have registered and the Brock course includes a partial online component. This has proved to be very useful as it provides a discussion area to post travel information and facilitates

“Candidates experience Chinese culture, network with other teachers in all parts of the course, and put what they have learned in the classroom into action in their own classes in China.”

team planning and discussion.

Teaching in China is a wonderful professional development experience. Candidates experience Chinese culture, network with other teachers in all parts of the course, and put what

they have learned in the classroom into action in their own classes in China. The course itself models best practice. And the shopping and touring are fabulous!

Cost, including airfare, food and accommodation, touring and transportation in China is \$1200 plus the Brock course cost.

For more information contact Cheryl Ende

Course Director, ESL

Centre for Continuing Studies

Brock University

cende@mountaincable.net





Soros Professional English Language Training Program(SPELT) by: Mirjana Acic-Kazinic

OSI works with Soros foundations in Central and Eastern Europe and the former Soviet Union, Guatemala, Haiti, Mongolia, Africa.

Started in 1990, SPELT seeks to bring modern teaching methodologies to the countries in the foundation network by supplying MA-degree TESL/TEFL specialists to selected teacher training colleges and university departments. SPELT is a network program of the Open Society Institute (OSI). OSI is at the center of an informal network of foundations and organizations active in the United States and more than 50 other countries worldwide. Established in 1993 by investor and philanthropist George Soros, OSI is based in New York City and supports network-wide programs, grant making activities and international initiatives. OSI works with Soros foundations in Central

and Eastern Europe and the former Soviet Union, Guatemala, Haiti, Mongolia, and Africa.

Qualifications

-MA in TESL/TEFL or DELTA and considerable teacher training experience required for SPELT Teacher Trainer positions
- MA in TESL/TEFL and/OR Applied Linguistics OR BA + CELTA as well as 1+ years of teaching experience required for SPELT Teaching Fellow positions
-Previous travels abroad and knowledge of second language preferred.

Compensation and Benefits

-Local salary provided by host institution
-Housing provided by host

institution or funded by local Soros foundation
-\$6,000 salary stipend per academic year for SPELT Fellows;
-\$12,000 stipend per academic year for SPELT Teacher Trainers;
- International round trip transportation from residence to assignment;
-Comprehensive group medical/hospitalization insurance;
-\$ 550 book allowance

If you would like to get more information or if you'd like to apply for the positions please visit the web site www.soros.org/spelt. Applications may be downloaded.

Some Additional Teaching Abroad Information

Here are some additional addresses and/or web sites about teaching abroad:

Interact Nova Group Canada

1881 Yonge Street, Suite 700

Toronto, Ontario M4S 3C4

Telephone: (416) 481-6000

FAX: (416) 481-1362

Email: novatwo@globalserve.net

Web site:

<http://www.iprimus.ca/~novatwo/>

- Job postings around the world:

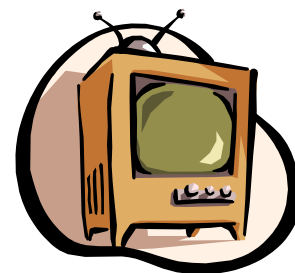
<http://www.tefl.com>

- Ever watch "The Lofters" or "Big Brother"? Now there's a show called "The English Teachers." Follow the lives of English teachers in various foreign countries.

10:30-11:00 pm Tuesday nights

9:00-9:30 pm Friday nights

on the Life Network



STYLE AND SUBSTANCE: A MULTIMEDIA APPROACH TO LITERATURE AND COMPOSITION

This textbook is designed to teach writing in response to different kinds of literary works. The textbook is divided into 4 units: Short Stories; Essays; Poetry and Drama. It features historical and cultural backgrounds, analytical exercises aimed at increasing students' interpretative abilities, writing activities designed to develop students' composition skills, and oral activities geared at preparing students to make a finely honed oral analysis at the end of the school term. Glossaries of literary and grammatical terms are included at the end of the book. Best of all, 40% of the authors featured in the textbook are Canadian.

Publisher: Pearson Education ESL/ERPI

5757 Cypihot Street

Saint-Laurent, Quebec H4S 1R3

Telephone orders

(514) 334-2690 or 1-800-263-3678 x. 232

Fax orders

(514) 334-4720 or 1-800-643-4720

erpidim@erpi.com(orders)

erpi-esl@erpi.com

Price: \$39.95 (20% school net discount)

Publisher's Page



<i>SOUNDS EASY!</i>		DELTA'S KEY TO THE TOEFL-BASIC COURSE
<i>Author: Sharron Bassano</i>		BY: NANCY GALLAGHER
<p>This completely reproducible resource book teaches the sound system of the English language. Students of grade 5 through Adult practice and improve their pronunciation, spelling, phonetics, vocabulary, and listening and speaking skills. This book includes a Teacher Guide, answer key, and charts that cover the alphabet, consonants, vowels, and initial/final clusters.</p> <p>Price: \$33.50</p>	<p>The Resource Centre PO Box 190 Waterloo, ON N2J 3Z9 Phone: 1-800-923-0330 Fax: 519-747-5629 Website: www.theresourcecentre.com e-mail: resourcecentre@sympatico.ca</p>	<p>Yes, its here! The best-selling TOEFL series, Delta's Key to the TOEFL, finally has a companion! Delta's brand new Basic Course is still the most comprehensive TOEFL course available, and at the lowest price! Features practice for both the paper-based test and the CBT, two full-length practice exams, cassettes, 22 quizzes, and much more. Used as both a primary course book, and as a teacher reference book.</p> <p>Text: \$27.95 Cassettes (3): \$34.95</p>



Useful Websites

Randall's ESL Listening Lab *<http://www.esl-lab.com>*

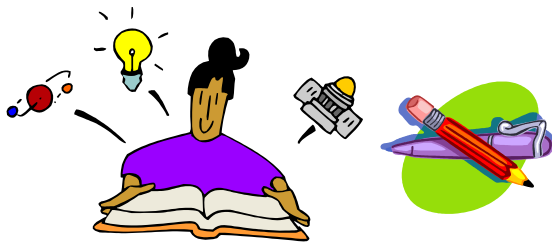


If you are looking for extra listening exercises for your students, try Randall's ESL Listening Lab. This website contains exercises that are divided into 4 main categories: General Listening Quizzes, Quizzes for Academic Purpose, Long Conversations with Real

Video, and Short Listening Exercises. Each of these sections is further divided into Easy, Medium, and Difficult. (The longer the listening blurb, the more difficult it is.)

The format of each lesson is as follows:

1. Pre-listening Exercise
2. Listening Exercise
3. Post listening Exercise
4. Quiz Script
5. Text Completion



CNN SF

<http://www.literacynet.org/cnnsf/archives.html>

This website is recommended for adults with moderate reading and speaking comprehension skills including advanced ESL or non-native English speakers.

This website offers web-delivered instruction using current and past CNN San Francisco bureau news stories.

Each story module includes the full text of each story and interactive activities to test comprehension. The learner can choose

to read the text, listen to the text, or view the broadcast through streaming video.

After reading the story (abridged or regular) students complete exercises to check comprehension. Exercises include:

- Word Selection
- Multiple Choice
- Vocabulary
- Sequencing
- Questions and Answers
- Your Turn!

Students can check their responses after completing each section.

The "Your Turn!" module allows learners to respond to a question concerning the story they have just read. Learners use the email form below the question to submit their comments. All comments are collected and posted on the "Your Turn!" page. Learners are encouraged to respond to other learners' comments.

Recommended Web Sites for Activists

Join the Coalition for Stable Funding of Adult ESL Classes!

Don't leave adult students out in the cold. For more information contact Terri Preston.

Email: terri.preston@cupe4400.org

Phone (416) 597-3957 Ext. 241

Fax: (416) 204-1570



Useful Websites

Continued

Do you have a web site you find useful? Please share it with us! Email the website address and a short summary or review to:

Rose at

mar1638@yahoo.com

Or Irene at

ireneinhamilton@hotmail.com

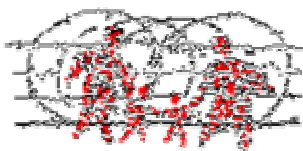
TESL Canada wants your input

- What is an appropriate maximum class size?
- What qualifications should program directors have?
- Should programs ensure that all international students have medical insurance?

Send your comments to

TESL Canada:

teslcanada@home.com



Canadian Council for Refugees

The Canadian Council for Refugees is a non-profit umbrella organization, which unites 170 agencies across Canada involved in the settlement, sponsorship and protection of refugees and immigrants. The CCR advocates for the rights of refugees around the world, while playing a key role in Canadian

policy development in the area of refugee and immigration issues.

For further information or to become a member visit the website at www.web.net/~ccr

Refugee Women Fleeing Gender-based Persecution

The CCR has created a network of over 200 in-

dividuals and organizations interested in the issue communicating by email. A listserv (gender@yorku.ca) has recently been created. To join the network (and the listserv), contact Afsaneh Hojabri, ahojabr@total.net.

Apply for Your TESL Ontario Certificate



Grandparenting Clause*
in effect until
June 30th, 2002



*** If you have been teaching adult ESL AND have 300 (not 3000) hours of teaching experience prior to June 2000, you may still be eligible for the TESL Ontario Certificate—the current standard for ESL Professionals in Ontario.**

For more information, visit <http://www.teslontario.org>

Want to go to the April 2003 Conference for free!

Would you like to go the next April Mini-Conference for free? How? EASY! Send in a submission for the newsletter.

Each submission gives you one chance for free admission to the next April Conference

What are we looking for?

- Reviews of websites you use
- reviews of materials you use
- Helpful teaching hints
- What you and your students are doing
- Anything you'd like to share with other ESL teachers
- Nov. 15 for December issue
- Feb. 15 for March issue
- May 15 for June issue

Deadlines for submission:

Please send submissions as an attachment through email to:

ireneinhilton@hotmail.com OR
 mar1638@yahoo.com



We look forward to hearing from you!

GOOD LUCK!